

CERTIFIED LAND CORNER RECORDATION

DESCRIPTION OF CORNER EVIDENCE FOUND, AND ORIGINAL RECORD (if known)

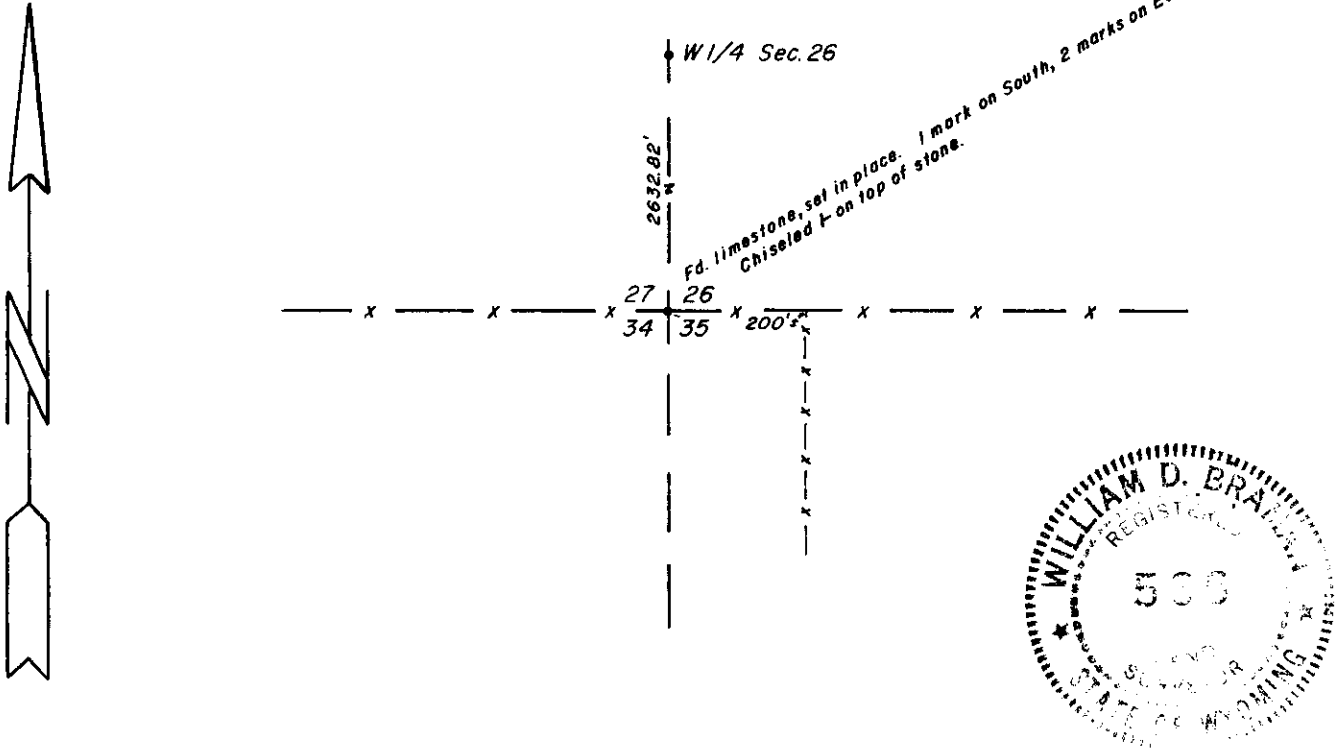
27 | 26
 34 | 35
 T.13 N.
 R.68 W.
 6th P.M.

Found limestone, set. 1 mark on South, 2 marks on East.
 Exposed part measures 18"x5"x12". Falls in bottom of sharp ravine,
 1.82' north of East-West fenceline. There is exposed, sandstone
 ledge, approximately 20' east, up side of ravine.

DESCRIPTION OF MONUMENT AND ACCESSORIES ESTABLISHED
 TO PERPETUATE THE ORIGINAL LOCATION OF THIS CORNER:

Set stake and lath alongside of stone.

SKETCH, WITH COURSE AND DISTANCE TO ADJACENT CORNER IF DETERMINED IN THIS SURVEY.
 (May Sketch or Paste Reproduction on Reverse Side.)



I, William D. Braman certify that I have carefully performed or reviewed the work done on the diagrammed corner as reported on this recordation form and approve the same.

William D. Braman Wyo. LS 566
 Signature of Surveyor Registration No.

STATE OF WYOMING,
 Office of Clerk and Recorder,
 County of Laramie

This "corner record" was filed for record on the 8 day of July, 1977, was noted on the cross-index plat and is assigned page No. _____, in book No. _____.

Janet C Whitehead
 County Official

Cross Index No.	T. _____	R. _____	Mer.
	<u>V-17</u>	<u>13</u>	<u>68</u> Mer.
	_____	_____	Mer.
	_____	_____	Mer.
	_____	_____	Mer.
	_____	_____	Mer.
	_____	_____	Mer.

445673

Photographed

Indexed

POSTED

Assessor